

Delivering VALUE For Tasmania

IN 2015

68

PER CENT OF ALL CONTESTABLE FREIGHT BURNIE-BRIGHTON

27

PER CENT OF TASMANIA'S TOTAL LAND FREIGHT TASK IS ON RAIL (PER NTK)

50

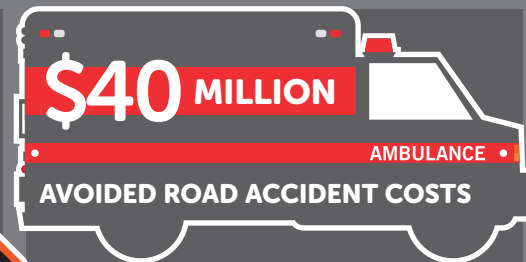
PER CENT OF ALL CONTESTABLE FREIGHT ON CORRIDORS COVERED BY THE RAIL SYSTEM



\$159 MILLION TOTAL VALUE GENERATED BY RAIL TO 2019



AVOIDED ROAD MAINTENANCE COSTS



OPERATING COST SAVINGS FOR COMMERCE AND INDUSTRY

FREIGHT RAIL: Good for business; good for the environment; good for the community.